



Barnfield Close

Kingsthorpe, Northampton

oriordanbond
SALES & LETTINGS



Barnfield Close

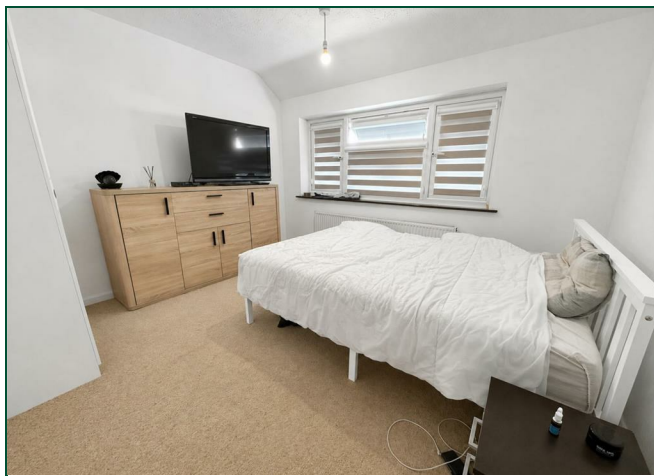
Kingsthorpe
NN2 8AW

Price
£300,000

Offered to the market with no onward chain is this three bedroom semi-detached family home located in a quiet cul-de-sac within the heart of Kingsthorpe. The property is within walking distance to local schools, shops and countryside parks.

The accommodation comprises entrance hall, sitting room, open plan kitchen/dining room with patio doors to the rear garden, family bathroom and utility room. From the first floor landing are three double bedrooms. Outside is a private rear garden with side access. To the front of the property is a lawn and large driveway providing off road parking for several vehicles leading to a detached single garage. Further benefits include uPVC double glazing and gas radiator heating. (B/940/M)

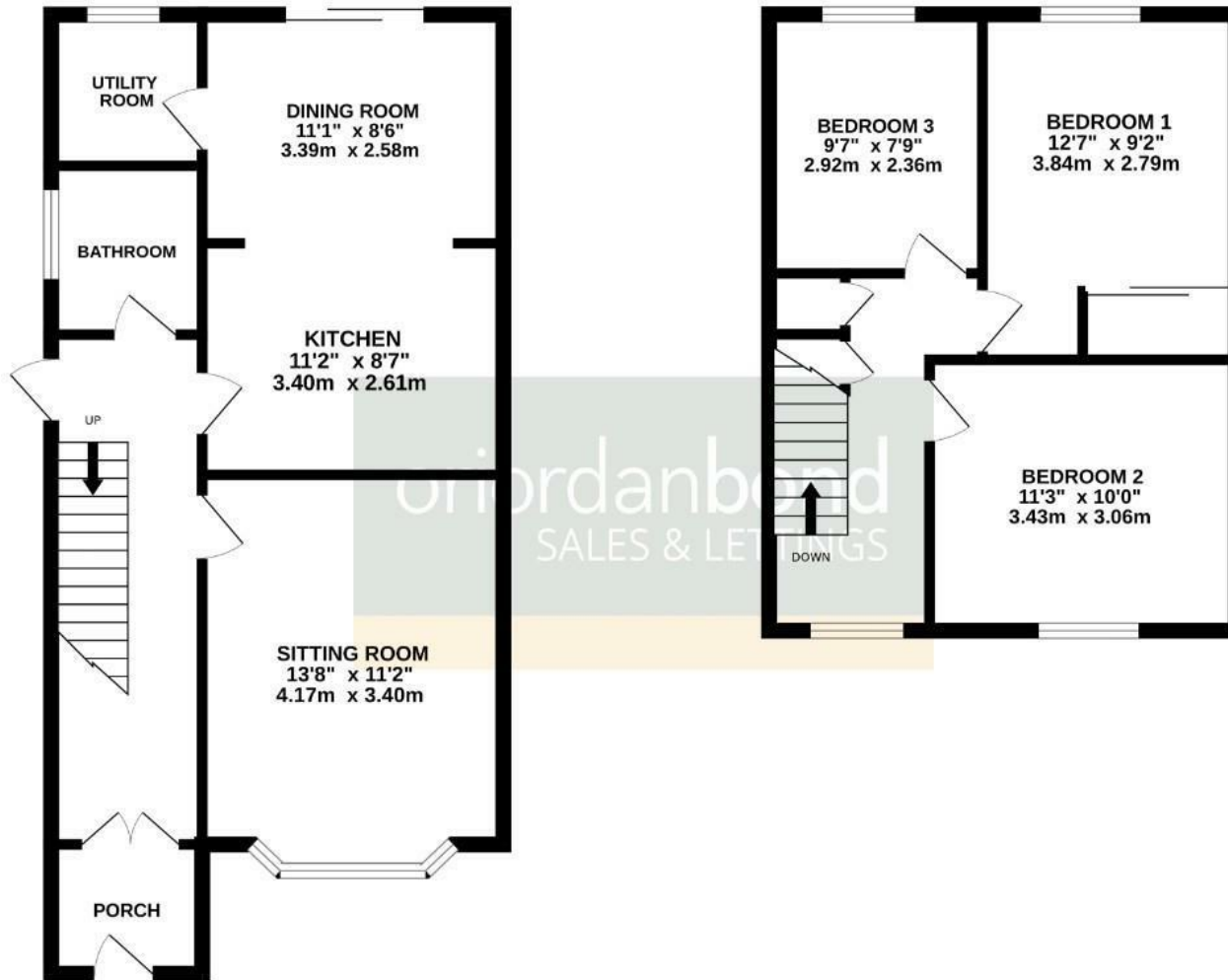
- Three bedroom semi-detached family home
- Open plan kitchen/dining room with utility room
- Gas radiator heating
- Private rear garden
- Driveway and garage
- No onward chain





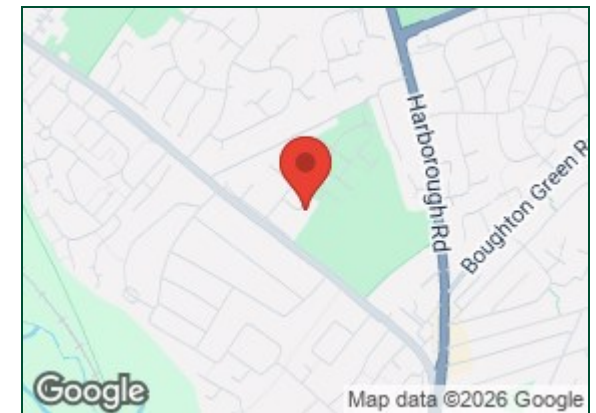
GROUND FLOOR
546 sq.ft. (50.7 sq.m.) approx.

1ST FLOOR
394 sq.ft. (36.6 sq.m.) approx.



TOTAL FLOOR AREA : 940 sq.ft. (87.3 sq.m.) approx.

Whilst every attempt has been made to ensure the accuracy of the floorplan contained here, measurements of doors, windows, rooms and any other items are approximate and no responsibility is taken for any error, omission or mis-statement. This plan is for illustrative purposes only and should be used as such by any prospective purchaser. The services, systems and appliances shown have not been tested and no guarantee as to their operability or efficiency can be given.
Made with Metropix ©2026



Additional information

- Council Tax Band: C
- Energy Efficiency Rating: C

Viewing

Viewing strictly by appointment – details below

Disclaimer

O'Riordan Bond Estate Agents Limited has not tested apparatus, equipment, fittings or services and so cannot verify they are in working order. The buyer is advised to obtain verification from their solicitor or surveyor.

O'Riordan Bond Kingsthorpe Sales

01604 722007

kingsthorpe@oriordanbond.co.uk

